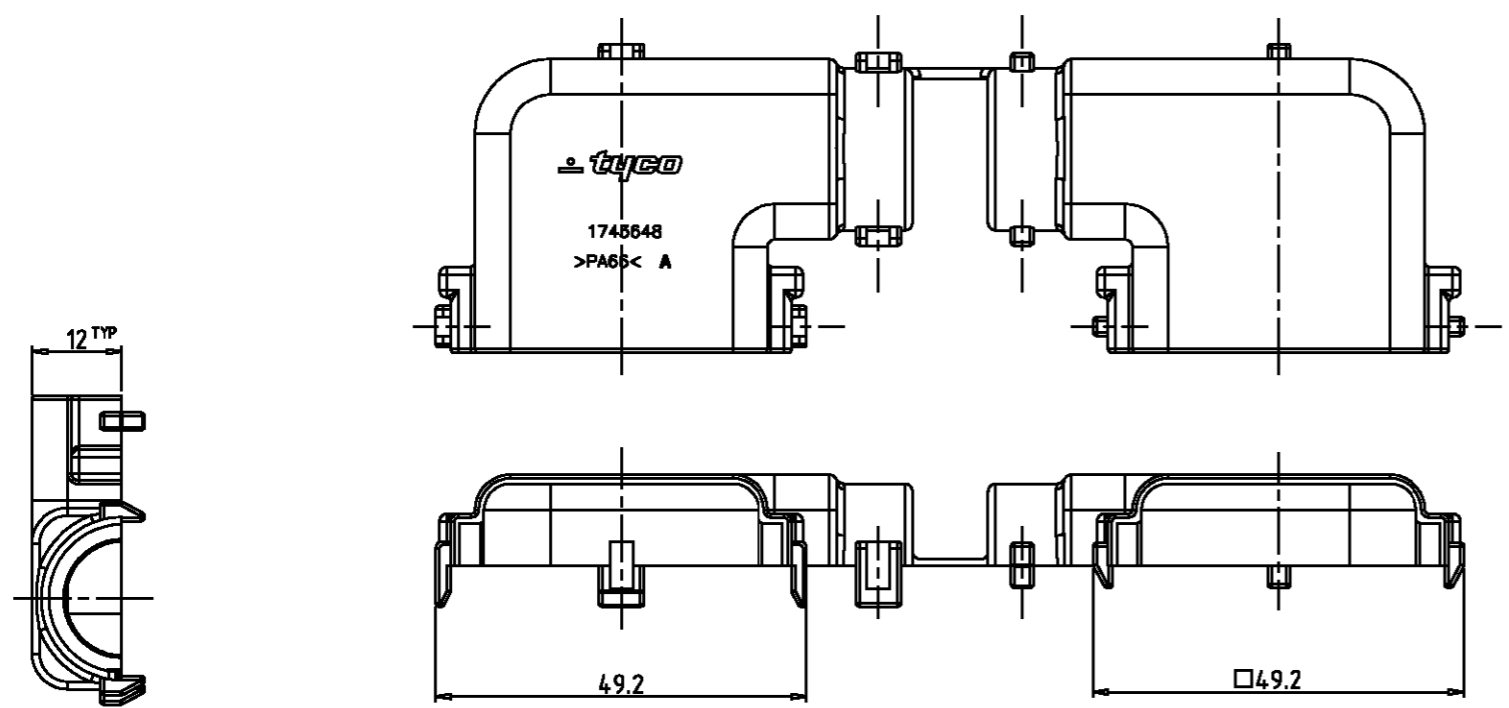
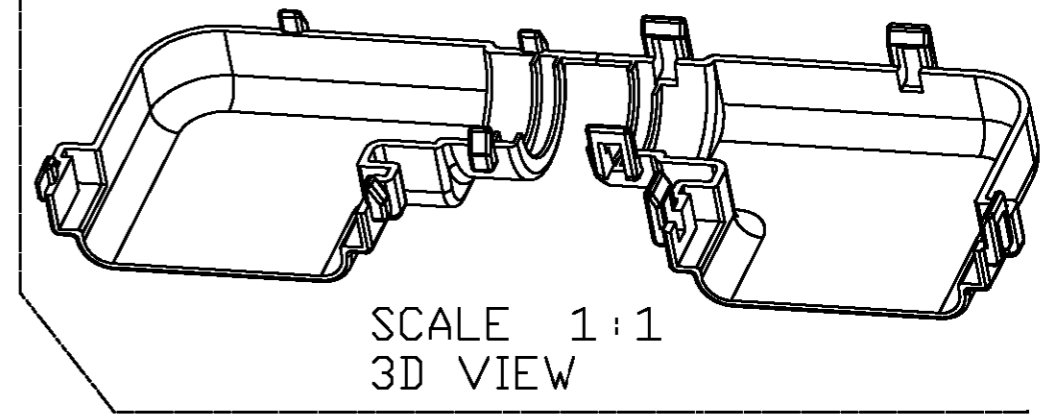
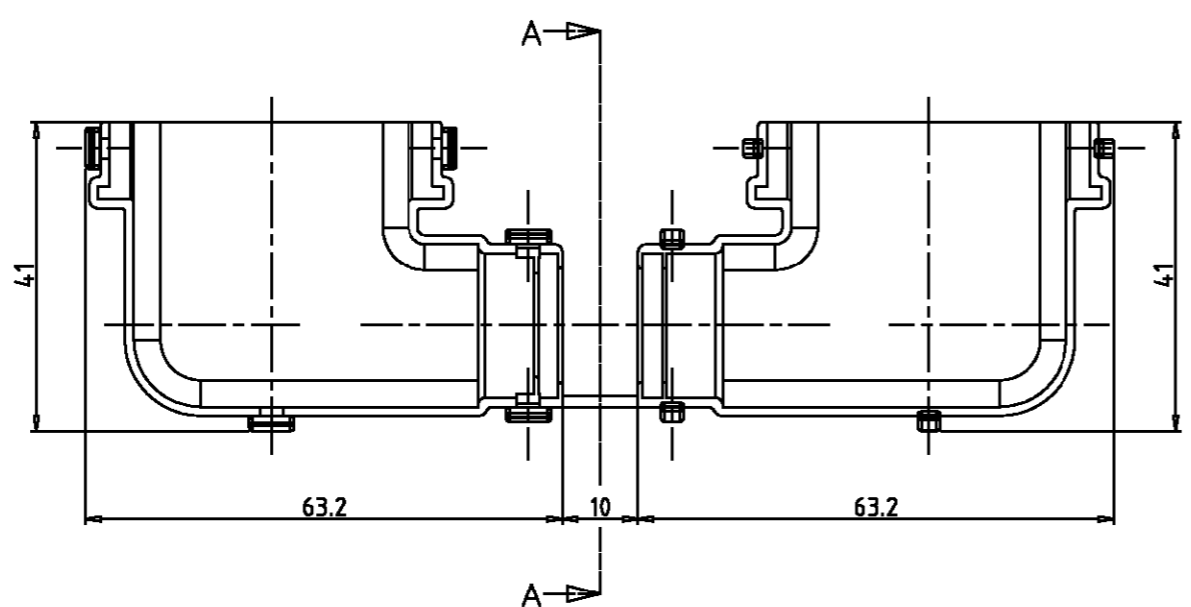


THIS DRAWING IS UNPUBLISHED. RELEASED FOR PUBLICATION  
 © COPYRIGHT BY TYCO ELECTRONICS CORPORATION. ALL RIGHTS RESERVED.

LOC	DIST	REVISIONS					
DS		P	LTR	DESCRIPTION	DATE	DWN	APVD
		A		RELEASED	11/JAN/06	IS	JK



A-A



- NOTES:
1. WARP IS 0.5 MAX. AND FLASH IS 0.3 MAX.
  2. APPLICABLE CONNECTOR : X-1743062-X
  3. APPLICABLE CORRUGATOR DIAMETER :  $\phi 14.0$
  4. APPLICATION TEST SPEC. : MS210-06C (EXCEPT 4.4)

control priority dimension;  
 CRITICAL,  MAJOR,  MINOR

THIS DRAWING IS A CONTROLLED DOCUMENT FOR TYCO ELECTRONICS CORPORATION. IT IS SUBJECT TO CHANGE AND THE CONTROLLING ENGINEERING ORGANIZATION SHOULD BE CONTACTED FOR THE LATEST REVISION.

DIMENSIONS: mm	TOLERANCES UNLESS OTHERWISE SPECIFIED:  DECIMALS : $\pm 0.3$ ANGLES : $\pm 3^\circ$
3rd ANGLE PROJECTION	
MATERIAL SEE TABLE	FINISH

0-1743648-2	CAP COVER	PA 66	BLACK
PART NO.	DESCRIPTION	MATERIAL	COLOR
		AMP KOREA. kyungsan, korea	
NAME COVER HSG FOR MTII/JPT SLD 36P CAP ASS'Y (TYPE "B")			
SIZE A3	CAGE CODE 00779	DRAWING NO C=1743648	RESTRICTED TO
CUSTOMER DRAWING			SCALE 2/1 SHEET 1 OF 1 REV A